

Clearwater - Potlatch Timber Protective Association



2017 Annual Report

Report of the Chief Fire Warden

OFFICERS AND MEMBERS OF THE CLEARWATER-POTLATCH TIMBER PROTECTIVE ASSOCIATION, INC.

I am pleased to present the annual report for January 1, 2017 to December 31, 2017. This report includes the fiscal yearend period July 1, 2016 to June 30, 2017, providing information of the Association's revenues and expenses.

During the 2017 fire season, C-PTPA responded to 21 fires beginning in May and ending in early September. Human caused fires were above average with 14 fires; lightning caused fire activity was well below normal with only 7 initial attack fires. The Association had two fires that originated in structures that burned into the wildland. The Moon Dance Fire was an early morning house fire that burned steep/rocky terrain and potentially threatened many homes and utilities. The C-PTPA responded, along with other resources from Sunnyside RFD, Evergreen VFD, Orofino FD and the Clearwater County Sheriff to deal with not only suppression of the fire, but potential evacuations of nearby residents. The spread of the fire was stopped before dawn, eliminating the need for evacuations. However, suppression required further aircraft support and a short duration Type 3 Incident Management Team, made up of smoke jumpers from McCall, Idaho. The fire was stopped at 6.6 acres and no other structures were lost as a result of effective initial attack by all agencies involved. Due to the complexity of the incident, the Moon Dance Fire did prove to be the most difficult fire in 2017.

Portions of the Grangeville Area were under stage 1 fire restrictions for uplands and Stage 2 restrictions in the lowlands for a month or so. Association employees enforced the campfire and smoking bans very diligently in our protective area, minimizing any campfire escapes during this dry period. Hillcrest continues to support the Association with an exclusive use helicopter on standby starting from July 1 and ending mid-September (with the possibility to extend depending on fire season). C-PTPA's Board of Directors requires the Association to have a helicopter on standby each year for quick response to keep fires at bay until ground resources arrive and begin suppression activities.

There were several off-district fire opportunities during 2017. Association employees were able to support incidents in North Carolina, Tennessee, Arizona, Colorado, Montana, Southern Oregon and Southern California. These assignments provided a very large cost savings to our protection budget.

The hazard management program continues to help Association members meet hazard rule requirements and give Association seasonal employees valuable experience. These activities include installing handlines and burning, both piled slash and broadcast units, which helps them prepare for any new initial attack fires.

In May, we attended the Oregon and Idaho Association meeting at Coos Forest Protective Association in Coos Bay, Oregon. This meeting provides an opportunity to discuss topics that are pertinent to the Associations and has created an avenue to share resources when the season dictates. Oregon's 2017 fire season created such a situation, and the C-PTPA was able to send a limited amount of resources to help the Coos FPA and Douglas FPA. We were only able to provide limited assistance due to our own high fire danger and staffing, but I feel if conditions were different, we would have sent more resources to assist them. Next year's meeting will be hosted by the Southern Idaho Timber Protective Association in McCall, Idaho.

Even though 2017's fire occurrence was below our historical average, the goal of the Association remains unchanged since our founding; putting fires out when they are small. A well-trained, dedicated staff is necessary to provide a high-level of forest and resource protection to our customers. I would like to personally thank all C-PTPA employees and their families for their sacrifices during the fire season. Without them, none of this would be possible. I would also like to thank all of the forest industry, co-operating agencies and private landowners for their support during 2017.

Respectfully submitted,



Len H. Young
Chief Fire Warden
C-PTPA



Idaho-Oregon
Timber Protective Association Meeting
Coos Bay, Oregon 2017

(L to R): Mike Robison-Coos Forest Protective Association, Len Young-C-PTPA,
R.D. Buell-Walker Range Fire Patrol, Pat Skrip-Douglas Forest Protective Association.

C-PTPA Official Directory

OFFICERS

Rich McMillan, President
Greg Danly, Vice President
Len Young, Secretary-Treasurer
Len Young, Chief Fire Warden
Kimberly S-Browning, Assistant Secretary-Treasurer

DIRECTORS

Rich McMillan	Potlatch Corporation
Kyle Wetmore	Idaho Forest Group
Eric Besaw	State of Idaho
M. John Larson	M. John Larson Logging
Greg Danly	Empire Lumber Company
Mike Reggear	Small Landowner Representative

FIRE COMMITTEE

Directors serve as Fire Committee

AUDIT COMMITTEE

Greg Danly, Chairman
Board of Directors serve as Committee

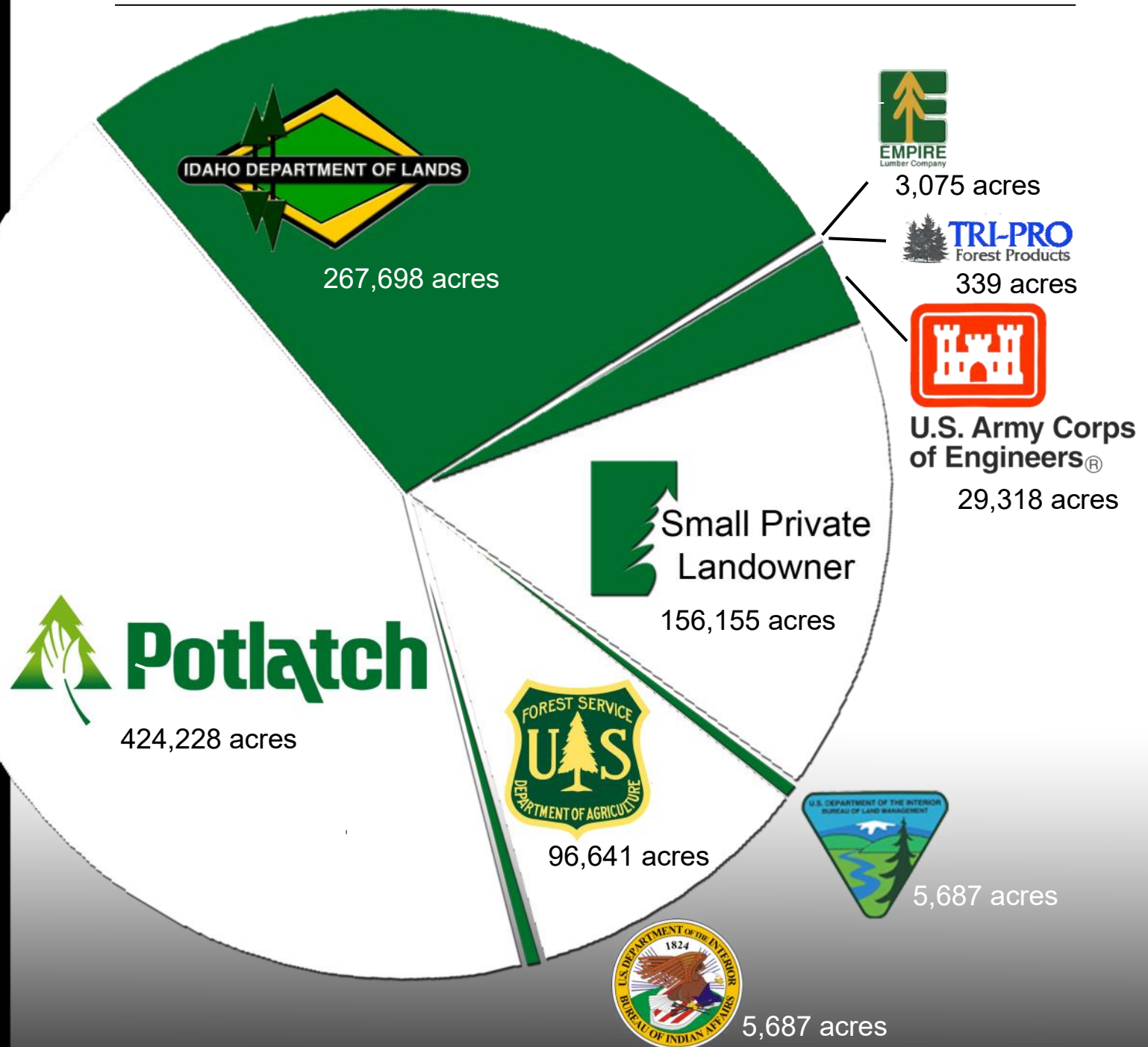
The Clearwater Timber Protective Association and the Potlatch Timber Protective Association were separately organized in the early 1900's. In 1966, these two entities merged to form the Clearwater-Potlatch Timber Protective Association, a non-corporate entity. Subsequently, on July 16, 1982, the Association completed filings for incorporation under the Idaho Nonprofit Corporation Act and became the Clearwater-Potlatch Timber Protective Association, Inc.

The Association is controlled by forest landowners belonging to its membership and subject to the provisions of the Idaho Forestry Act. The Association is primarily responsible for the conservation and protection of the forests and forestland within the State of Idaho; specifically, the Palouse, Potlatch and North Fork of the Clearwater River drainages.

LEGISLATIVE COMMITTEE

Eric Besaw, State of Idaho

Landowners and Acres Protected



Member	Acres Protected
Potlatch Corporation	424,228
State of Idaho – Department of Lands	267,698
Empire Lumber Company	3,075
Corps of Engineers	29,318
Tri-Pro Forest Products	339
Small Private Landowner	156,155
B.L.M. Lands	5,687
U.S. Forest Service	96,641
Tribal Lands	5,687
Total Member Acres Protected	988,828

Mission Statement

The mission of the Clearwater-Potlatch Timber Protective Association was a simple premise in 1905 - safely suppress fires when they are small. That mindset has remained for over 113 years and is the idea that still drives the Association today.



An educated firefighter is a safer firefighter. C-PTPA fire crews are trained annually in the basic skills it takes to safely extinguish fires. The Association participates with other agencies to train loggers and rural fire departments to draw from when the need arises. Our efforts do not stop with today's workforce; we target tomorrow's by teaching kids the dangers and uses of fire.

The hazard management program is designed to reduce the fire hazard created by harvesting timber. Prescribed burning provides a relatively controlled method of reducing potential fire growth and provides a suitable environment for tomorrow's trees to grow.

The C-PTPA maintains an administrative complex in Orofino and three satellite fire camps strategically located in our protection area. In an effort to keep unwanted fires as small as possible, four separate facilities are maintained to reduce arrival time on fires.



Fire Season 2017

The 2017 fire season for the Clearwater-Potlatch Timber Protective Association was characterized as below normal in severity and suppression activity.

The first fire of the season was on May 13th, with the last fire on the 4th of September. Although the weather remained relatively hot and dry throughout the season, lightning occurrence was below normal, resulting in far fewer fire starts than an average year.



Helicopter water drop
Moon Dance Fire

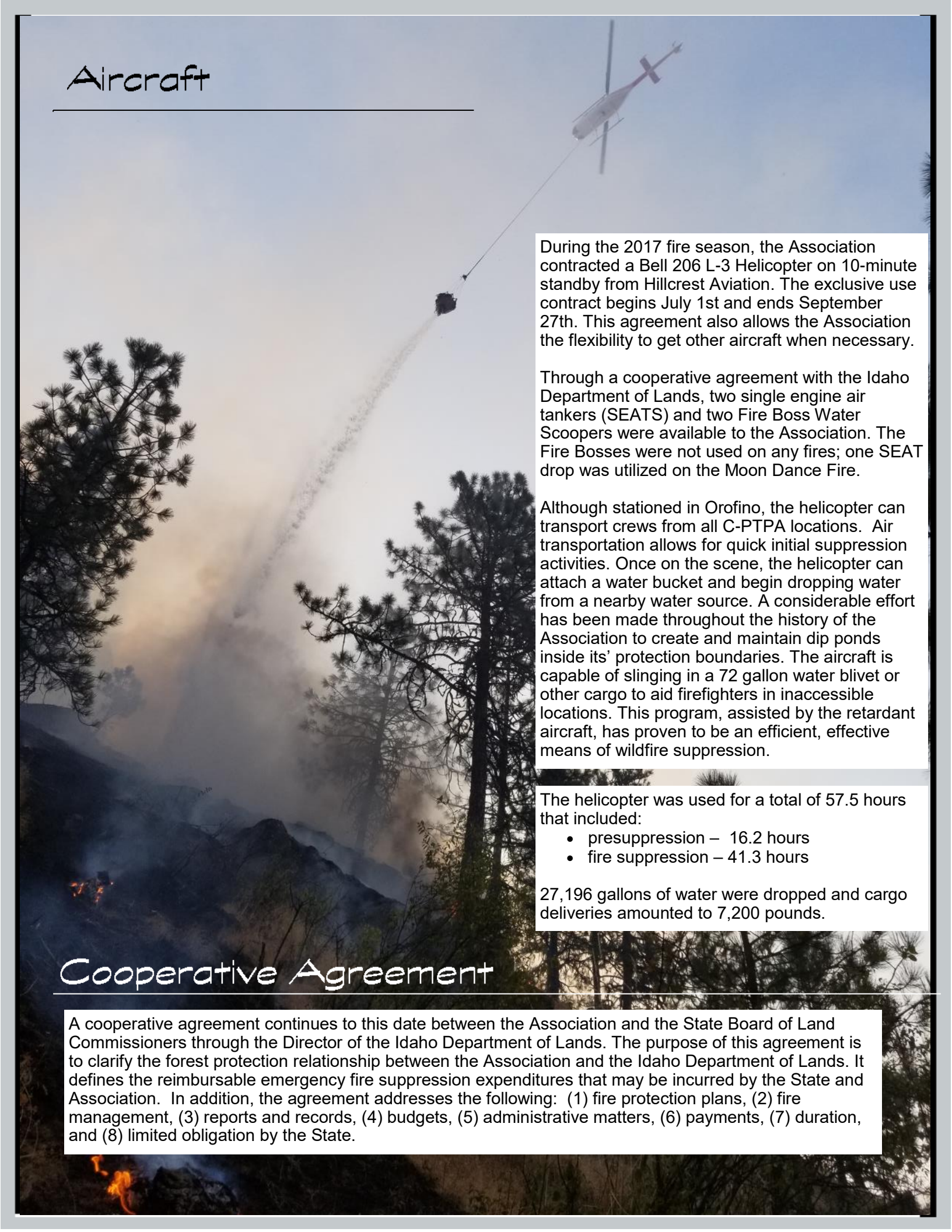
The Idaho Department of Lands Standard of Protection requires State Districts to meet the following standards:	The Clearwater-Potlatch Timber Protective Association has refined the IDL standards for the fuels and resources of our protective district to:	C-PTPA 2017
♦ Fires should be contained to less than 10 acres 94% of the time	♦ Fires should be contained to less than 10 acres 97% of the time	0 Fires 100%
♦ IDL should have no more than 34 human caused fires	♦ C-PTPA should have no more than 24 human caused fires	14 Fires 58.33%
♦ IDL should burn no more than 864 acres	♦ C-PTPA should burn no more than 380 acres	17.75 Acres 4.67%

This year, the C-PTPA had 14 human caused fires for 58.33% of the allowable standard and burned 17.75 acres for 4.67% of the allowable standard. The human caused fires were debris burns, equipment use, campfires, cigarettes, fireworks, powerline and miscellaneous.

Manning Class For Typical 77 Day Fire Season July 1st Through September 15th

Month	Low	Moderate	High -3	High +3	Very High	Extreme	Total Days
July	0	0	5	17	9	0	31
August	0	0	0	7	23	1	31
September	0	0	0	10	5	0	15
	0	0	5	34	37	1	77

Aircraft



During the 2017 fire season, the Association contracted a Bell 206 L-3 Helicopter on 10-minute standby from Hillcrest Aviation. The exclusive use contract begins July 1st and ends September 27th. This agreement also allows the Association the flexibility to get other aircraft when necessary.

Through a cooperative agreement with the Idaho Department of Lands, two single engine air tankers (SEATS) and two Fire Boss Water Scoopers were available to the Association. The Fire Bosses were not used on any fires; one SEAT drop was utilized on the Moon Dance Fire.

Although stationed in Orofino, the helicopter can transport crews from all C-PTPA locations. Air transportation allows for quick initial suppression activities. Once on the scene, the helicopter can attach a water bucket and begin dropping water from a nearby water source. A considerable effort has been made throughout the history of the Association to create and maintain dip ponds inside its' protection boundaries. The aircraft is capable of slinging in a 72 gallon water blivet or other cargo to aid firefighters in inaccessible locations. This program, assisted by the retardant aircraft, has proven to be an efficient, effective means of wildfire suppression.

The helicopter was used for a total of 57.5 hours that included:

- presuppression – 16.2 hours
- fire suppression – 41.3 hours

27,196 gallons of water were dropped and cargo deliveries amounted to 7,200 pounds.

Cooperative Agreement

A cooperative agreement continues to this date between the Association and the State Board of Land Commissioners through the Director of the Idaho Department of Lands. The purpose of this agreement is to clarify the forest protection relationship between the Association and the Idaho Department of Lands. It defines the reimbursable emergency fire suppression expenditures that may be incurred by the State and Association. In addition, the agreement addresses the following: (1) fire protection plans, (2) fire management, (3) reports and records, (4) budgets, (5) administrative matters, (6) payments, (7) duration, and (8) limited obligation by the State.

Dworshak Project - Added Protection

The contract with the Corps of Engineers to provide additional protection services was continued for the 2017 fire season. This agreement provides for a daily boat patrol and an aerial patrol of the reservoir on Friday through Monday afternoons, July 1st through September 15th. The boat patrols have proven very effective at detecting abandoned campfires in the many mini-camps along the reservoir. In 2017, there was one fire on Corps of Engineers property that burned .1 acres.

Hazard Management

The operating agreement between the State of Idaho and the Clearwater-Potlatch Timber Protective Association for the management of fire hazards resulting from commercial harvest was continued in 2017.

Equipment Replacement and Improvements

Inventory Added (DDOD):

- (4) 2.5 Ton Military Tractors
- Two Reefer Containers
- Two Diesel Generators

Inventory Excessed (FEPP):

- (1) 1963 D6 Caterpillar Dozer
- (6) Gamma Goats

Inventory Added (Commercial/Private):

- (1) 2017 Ford F150
- (2) 2017 Ford F350
- (1) 2017 Ford F450
- (2) 2018 Ram 3500
- (1) 2017 Globe Lowboy Trailer
- (1) 2008 Jeep Liberty
- (1) Honda Pioneer 1000 plus Trailer
- (1) 2011 Utility Dump Trailer

Inventory Sold Privately:

- (1) 2011 Ford F350
- (1) 2011 Ford F250

Association employees transported six Gamma Goats to Fort Hill Air Force Base in Ogden, Utah. The Gamma Goats were first acquired in the 1980s and proved to be an effective all-terrain fire engine. Due to age and lack of available parts, the decision was made to excess the remaining fleet. As part of the agreement with the U.S. Forest Service, the Goats had to be delivered to the base.



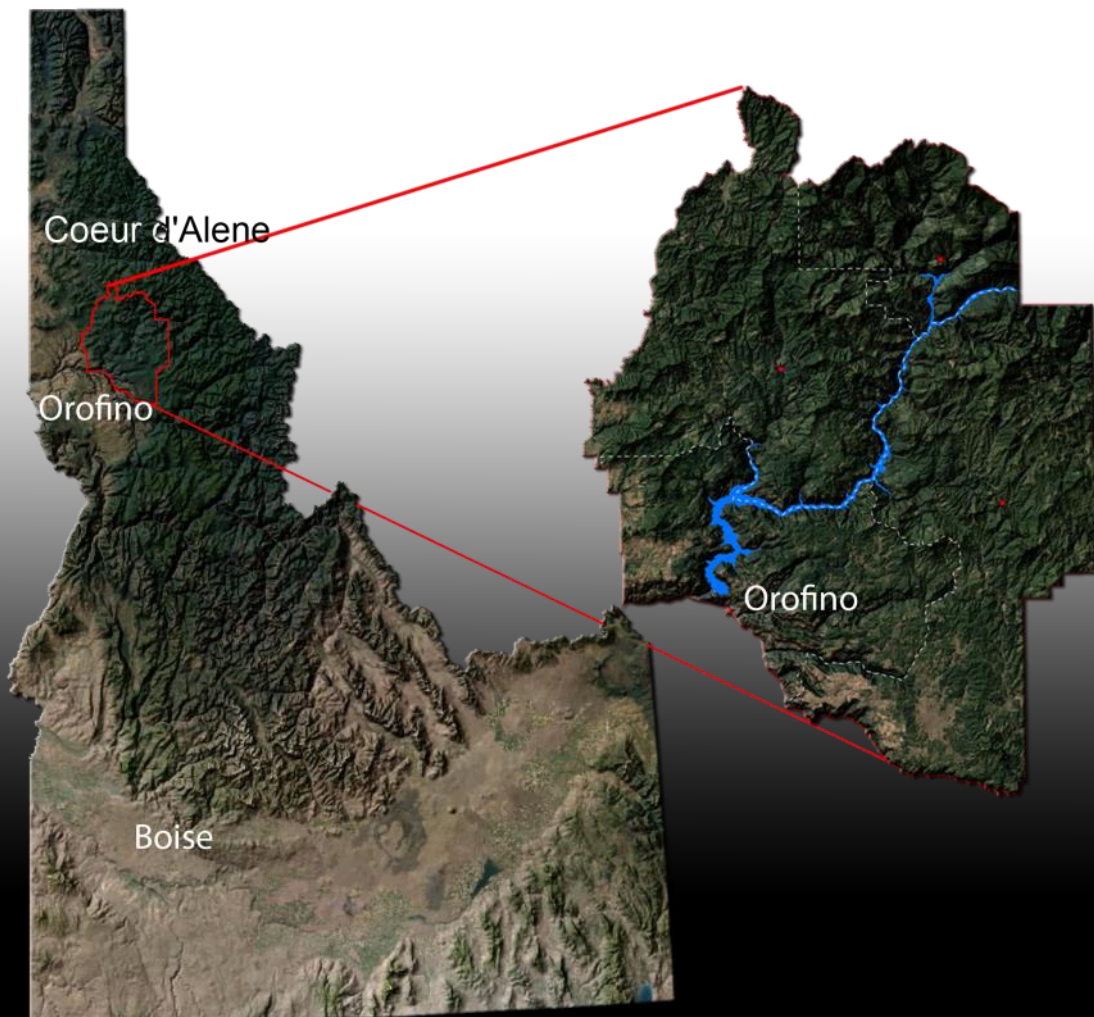
Acreage and Assessment of Members

7/1/2016 to 6/30/2017

Member	Acreage	\$.60 Assessment
Empire Lumber Company	3,075	\$1,845.00
Tri-Pro Forest Products	339	\$203.40
Potlatch Corporation	424,228	\$254,536.80
State of Idaho	267,698	\$160,618.80
Federal Agencies	96,641	\$57,984.60
*Corps of Engineers	29,318	\$44,739.00
**Small Private Landowners	156,155	\$160,056.00
1st. Assessment Levied 7/1/2016	977,454	\$679,983.60

*The Corps of Engineers pays their land assessment directly to the Association based on actual per acre cost.

**Small Private Landowners are assessed \$.60 per acre of timber, plus \$40 per structure. This money is collected by the State of Idaho and remitted to the Association



Balance Sheet - June 30, 2017

Assets	
Current Assets	
Cash	\$798,904
Receivables	\$127,748
Unbilled work in process	\$2,135
Inventory	\$84,791
Prepaid expenses	\$59,080
Total Current Assets	\$1,072,658
Property and Equipment , net of accumulated	
Depreciation of \$2,399,217	\$1,075,524
Total Assets	\$2,148,182
Liabilities and Net Assets	
Current Liabilities	
Accounts payable	\$32,268
Accrued wages	\$30,897
Accrued payroll liabilities	\$22,215
Accrued vacation	\$57,415
Accrued retiree insurance	\$47,159
Other accrued expenses	\$4,025
Deferred revenue	\$2,590
Total Current Liabilities	\$196,569
Long-Term Liabilities	
Net pension liability	\$749,000
Total Long-Term Liabilities	\$749,000
Total Liabilities	\$945,569
Net Assets	
Unrestricted	\$1,155,618
Temporarily restricted	\$46,995
Total Net Assets	\$1,202,613
Total Liabilities and Net Assets	\$2,148,182

2017 Fires

Date	Fire #	Fire Name	Area	Latitude	Longitude	Acres	Total Cost	Fuel Model	Landowner	Cause	Size Class
5/12/2017	99001	Bull Bear	ER	N46 43.013	W116 11.105	0.1	\$1,387.73	Closed Canopy Fir	USFS	Miscellaneous	0 - 25 acres
6/9/2017	99002	West 400	BC	N46 52.408	W115 55.717	0.1	\$1,114.78	Closed Canopy Fir	IDL	Lightning	0 - 25 acres
7/4/2017	99003	Tweek	ORO	N46 30.065	W116 19.043	0.1	\$561.53	Annual Grasslands & Forbs	IDFG	Fireworks	0 - 25 acres
7/8/2017	99004	Freeman Pile	ORO	N46 34.779	W116 16.999	0.1	\$6,688.41	Heavy Slash	CORP	Miscellaneous	0 - 25 acres
7/9/2017	99005	Hawk View Pile	ORO	N46 34.143	W116 18.333	0.1	\$1,387.00	Heavy Slash	PVT	Debris Burning	0 - 25 acres
7/11/2017	99006	Kitty Litter Pulp Reburn	HQ	N46 21.960	W115 51.758	0.25	\$6,032.98	Light Slash	IDL	Debris Burning	0 - 25 acres
7/15/2017	99007	Windy Peak	BC	N46 59.580	W116 04.990	2	\$53,886.96	Natural Heavy Down & Dead	USFS	Lightning	26 - 9.9 acres
7/15/2017	99008	Sour Diamond	ER	N46 47.663	W116 04.904	0.1	\$5,432.92	Closed Canopy Fir	Potlatch	Lightning	0 - 25 acres
7/15/2017	99009	Head of Bertha 2	HQ	N46 46.524	W115 45.869	0.1	\$4,218.85	Closed Canopy Fir	IDL	Lightning	0 - 25 acres
7/17/2017	99010	Borderline	HQ	N46 50.445	W115 38.922	0.25	\$5,673.05	Closed Canopy Fir	Potlatch	Lightning	0 - 25 acres
7/20/2017	99011	Silver Face	HQ	N46 38.927	W115 51.374	0.25	\$5,622.47	Closed Canopy Fir	IDL	Lightning	0 - 25 acres
7/21/2017	99012	Top of Kitten	ER	N46 58.280	W116 13.070	0.4	\$30,694.32	Natural Heavy Down & Dead	USFS	Miscellaneous	26 - 9.9 acres
7/30/2017	99013	Windy Peak 2	BC	N46 59.930	W116 04.560	0.25	\$11,927.74	Closed Canopy Fir	USFS	Lightning	0 - 25 acres
7/31/2017	99014	Kitty Litter 2	HQ	N46 21.545	W115 51.904	0.25	\$1,636.98	Low Brush and Forbes	IDL	Debris Burning	0 - 25 acres
8/13/2017	99015	Bovill Power Pole	ER	N46 50.595	W116 23.879	0.1	\$342.19	Annual Grasslands & Forbs	USFS	Powerline	0 - 25 acres
8/21/2017	99016	Big Green Eclipse	ER	N46 50.535	W116 03.994	0.1	\$3,490.01	Closed Canopy Fir	Potlatch	Miscellaneous	0 - 25 acres
8/23/2017	99017	East Fork Buncher	ER	N46 53.258	W116 11.586	0.1	\$3,328.22	Closed Canopy Fir	USFS	Equipment Use	0 - 25 acres
8/25/2017	99018	Early Bird Fire	HQ	N46 24.085	W115 55.763	0.25	\$1,513.77	Closed Canopy Fir	PVT	Smoking	0 - 25 acres
8/31/2017	99019	Upper Falls	ER	N46 44.300	W116 10.340	0.25	\$11,082.15	Natural Heavy Down & Dead	USFS	Campfire	0 - 25 acres
9/3/2017	99020	Moon Dance	ORO	N46 30.194	W116 26.460	6.6	\$43,866.89	Long Needle Pine with Grass	PVT	Miscellaneous	26 - 9.9 acres
9/4/2017	99021	Weippe Cedar	HQ	N46 22.682	W115 56.679	6	\$7,638.20	Perennial Grasslands	PVT	Miscellaneous	26 - 9.9 acres

Date	Date of Fire	Landowner	Landowner
Fire Number	Fire Number		PC - Potlatch
Fire Name	Name of Fire		IDL - Idaho Dept. of Lands
Area	BC - Boehls Cabin ER - Elk River HQ - Headquarters ORO - Orofino		COE - Corps of Engineers
Lat	Latitude		DOT - Dept. of Trans
Long	Longitude		IF & G - Idaho Fish and Game
Acres	Acres Burned		BIA - Bureau Of Indian Affairs
Cost	Fire Suppression Cost		USFS - U.S. Forest Service
Fuel Model	Type of Fuels Involved		BLM - Bureau of Land Management
		General Cause	PVT - Private Landowner
		Size Class	Cause of Fire
			Size Class

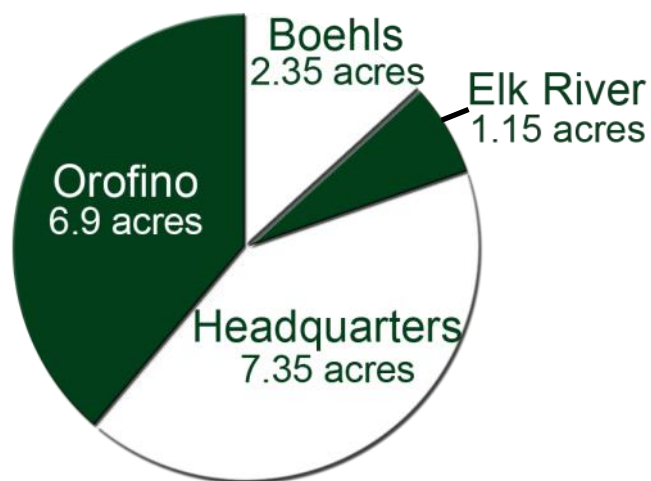
Fire Season Information

Fire Type By Landowner

Landowner	Lightning	Campfire	Debris Burning	Equipment Use	Arson	Misc.	Fireworks
Potlatch	2	0	0	0	0	1	0
Idaho Department of Lands	3	0	2	0	0	1	0
U.S. Forest Service	2	1	0	1	0	2	0
Idaho Fish and Game	0	0	0	0	0	0	1
Private	0	0	1	0	0	3	0
Railroad	0	0	0	0	0	0	0
Corps of Engineers	0	0	0	0	0	1	0
Totals	7	1	3	1	0	8	1

Fire Type By Month

Month	Fireworks	Lightning	Campfire	Debris Burning	Equipment Use	Arson	Misc.
April	0	0	0	0	0	0	0
May	0	0	0	0	0	0	1
June	0	1	0	0	0	0	0
July	1	6	0	3	0	0	1
August	0	0	1	0	1	0	4
September	0	0	0	0	0	0	2
October	0	0	0	0	0	0	0
Totals	1	7	1	3	1	0	8



Acres Burned Per Camp



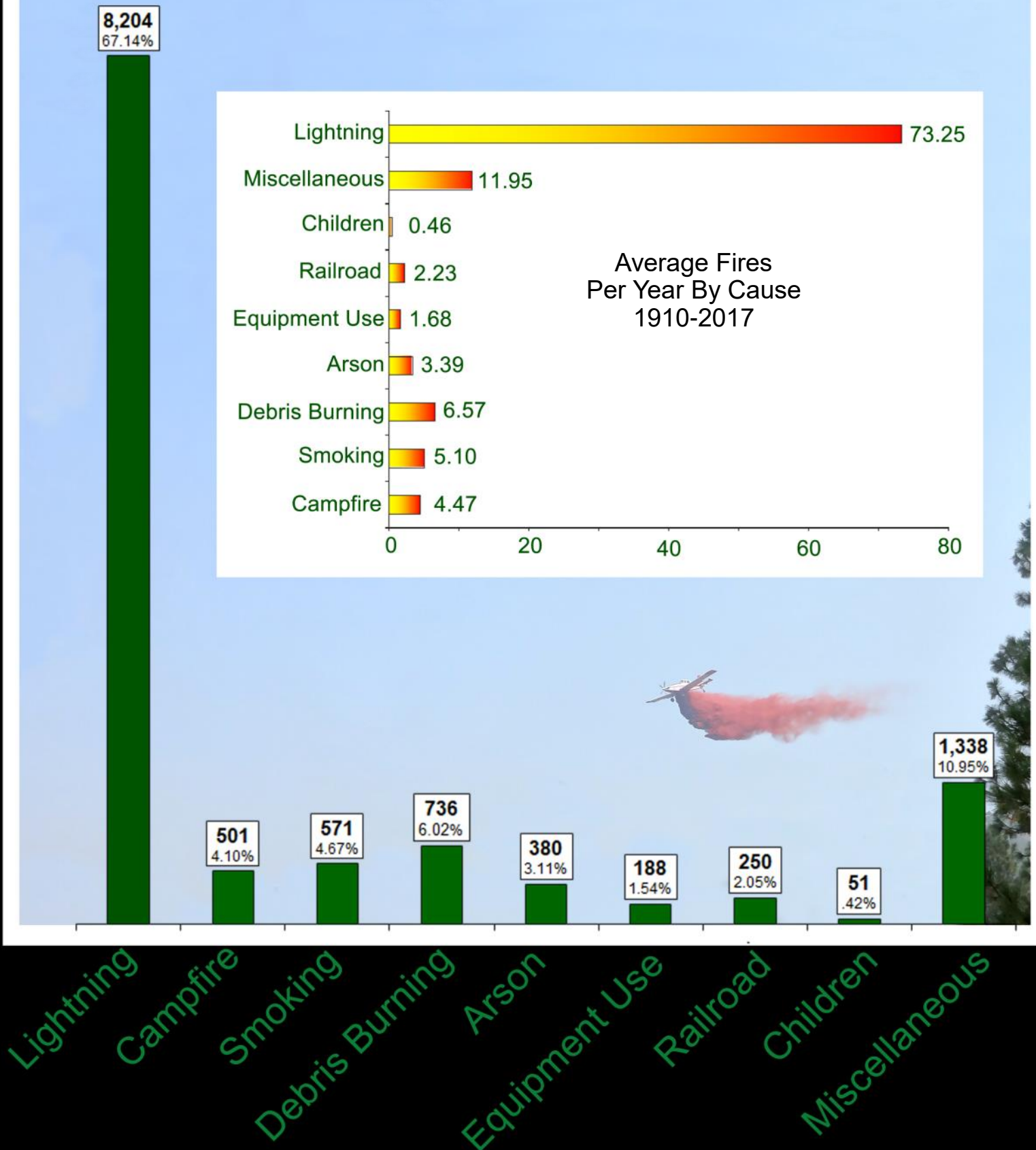
Fires Per Camp

42 Year Fire History

Year	Spot		A Fires		B Fires		C Fires		D Fires		E Fires		F Fires		Total Fires	Total Acres
	spot	acres	#	acres	#	acres	#	acres	#	acres	#	acres	#	acres		
1976	107	0.0	3	0.8	5	16.0	0	0.0	1	100.0	0	0.0	0	0.0	116	116.8
1977	118	0.0	3	0.8	8	11.4	1	20.0	0	0.0	0	0.0	0	0.0	130	32.2
1978	99	0.0	0	0.0	5	10.0	1	20.0	0	0.0	0	0.0	0	0.0	105	30.0
1979	139	0.0	0	0.0	18	19.8	0	0.0	0	0.0	0	0.0	0	0.0	157	19.8
1980	42	0.0	0	0.0	2	4.5	0	0.0	1	100.0	0	0.0	0	0.0	45	104.5
1981	55	0.0	4	1.0	4	3.0	1	40.0	0	0.0	0	0.0	0	0.0	64	44.0
1982	55	0.0	3	0.8	5	3.4	0	0.0	1	100.0	0	0.0	0	0.0	64	104.1
1983	52	0.0	0	0.0	5	9.0	1	75.0	0	0.0	0	0.0	0	0.0	58	84.0
1984	151	0.0	0	0.0	17	12.3	2	110.0	0	0.0	1	360.0	0	0.0	171	482.3
1985	79	0.0	7	1.8	9	14.3	2	67.0	0	0.0	0	0.0	0	0.0	97	83.0
1986	172	0.0	0	0.0	43	92.3	10	176.0	2	254.0	1	427.0	1	1,438.0	229	2,387.3
1987	77	0.0	0	0.0	19	21.0	0	0.0	0	0.0	0	0.0	0	0.0	96	21.0
1988	97	0.0	0	0.0	15	28.5	2	64.0	2	228.0	0	0.0	0	0.0	116	320.5
1989	0	0.0	182	0.0	20	32.0	0	0.0	0	0.0	0	0.0	0	0.0	202	32.0
1990	0	0.0	90	4.1	14	24.3	0	0.0	0	0.0	0	0.0	0	0.0	104	28.4
1991	0	0.0	95	10.6	16	23.8	0	0.0	0	0.0	0	0.0	0	0.0	111	34.3
1992	0	0.0	124	13.7	25	38.8	1	50.0	0	0.0	0	0.0	0	0.0	150	102.5
1993	0	0.0	34	3.7	2	2.5	2	40.0	0	0.0	0	0.0	0	0.0	38	46.2
1994	0	0.0	234	30.7	104	185.1	9	144.5	0	0.0	0	0.0	0	0.0	347	360.2
1995	0	0.0	43	6.1	8	13.8	0	0.0	0	0.0	0	0.0	0	0.0	51	19.9
1996	0	0.0	58	8.3	17	20.4	1	20.0	1	230.0	0	0.0	0	0.0	77	278.7
1997	0	0.0	33	3.7	7	14.1	2	51.0	0	0.0	0	0.0	0	0.0	42	68.8
1998	0	0.0	78	8.5	6	12.0	2	46.0	0	0.0	0	0.0	0	0.0	86	66.5
1999	0	0.0	61	8.1	11	20.7	0	0.0	0	0.0	0	0.0	0	0.0	72	28.9
2000	0	0.0	34	4.1	8	15.1	0	0.0	0	0.0	0	0.0	0	0.0	42	19.1
2001	0	0.0	57	7.8	13	17.8	0	0.0	0	0.0	0	0.0	0	0.0	70	25.6
2002	0	0.0	33	4.4	7	13.1	2	41.0	0	0.0	0	0.0	0	0.0	42	58.5
2003	0	0.0	28	3.7	5	7.2	1	31.7	0	0.0	0	0.0	0	0.0	34	42.6
2004	0	0.0	63	7.2	6	12.4	1	19.2	0	0.0	0	0.0	0	0.0	70	38.8
2005	0	0.0	14	2.0	4	21.0	1	26.0	0	0.0	0	0.0	0	0.0	19	49.0
2006	0	0.0	101	14.7	10	15.0	1	34.0	0	0.0	0	0.0	0	0.0	112	63.7
2007	0	0.0	32	4.6	16	38.9	3	76.5	0	0.0	0	0.0	0	0.0	51	120.0
2008	0	0.0	25	3.6	11	13.8	1	90.0	0	0.0	0	0.0	0	0.0	37	107.4
2009	0	0.0	34	3.7	6	5.0	0	0.0	0	0.0	0	0.0	0	0.0	40	8.7
2010	0	0.0	19	2.1	8	17.3	1	23.0	0	0.0	0	0.0	0	0.0	28	42.3
2011	0	0.0	30	4.5	12	17.3	0	0.0	0	0.0	0	0.0	0	0.0	42	21.8
2012	0	0.0	31	3.5	10	23.0	1	80.0	1	310.0	0	0.0	0	0.0	43	416.5
2013	0	0.0	49	6.9	16	23.5	2	102.3	1	110.0	0	0.0	1	1,100.0	69	1,342.7
2014	0	0.0	70	10.7	11	18.8	0	0.0	0	0.0	0	0.0	0	0.0	81	29.5
2015	0	0.0	38	6.6	11	8.0	1	40.0	0	0.0	1	689.0	1	1,750.0	52	2,493.6
2016	0	0.0	28	3.8	4	12.4	1	15.0	0	0.0	0	0.0	0	0.0	33	31.2
2017	0	0.0	17	2.8	4	15.0	0	0.0	0	0.0	0	0.0	0	0.0	21	17.8
1,243		0	1,755	198.8	547	927.1	53	1,502.2	10	1,432.0	3	1,476.0	3	4,288.0	3,614	9,824.1

Size Class Code	Fires			Acres		
	Total	Average/Year	% of Total	Total	Average/Year	% of Total
(S) Spot	1,243	29.6	34.4%	0.0	0.0	0.0%
(A) .25 or less	1,755	41.8	48.6%	198.8	4.7	2.0%
(B) .26 through 9.9	547	13.0	15.1%	927.1	22.1	9.4%
(C) 10 through 99.9	53	1.3	1.5%	1,502.2	35.8	15.3%
(D) 100 through 299.9	10	0.2	0.3%	1,432.0	34.1	14.6%
(E) 300 through 999.9	3	0.1	0.1%	1,476.0	35.1	15.0%
(F) 1000 through 4999.9	3	0.1	0.1%	4,288.0	102.1	43.6%
Total	3,614	86.0	100.0%	9,824.1	233.9	100%

112 Year Fire Occurrence



Airplane Usage on Fires

Program	Cessna 185 (53083)	Super Cub (1679P)	Total
Protection	91.3	30.5	121.8
Corps Of Engineers	0	54.6	54.6
Maintenance	2.6	7.3	9.9
Miscellaneous Jobs	.7	0	.7
Suppression	2.9	2.9	5.8
Total Hours	97.5	95.3	192.8
% of Total	50.6%	49.4%	100%

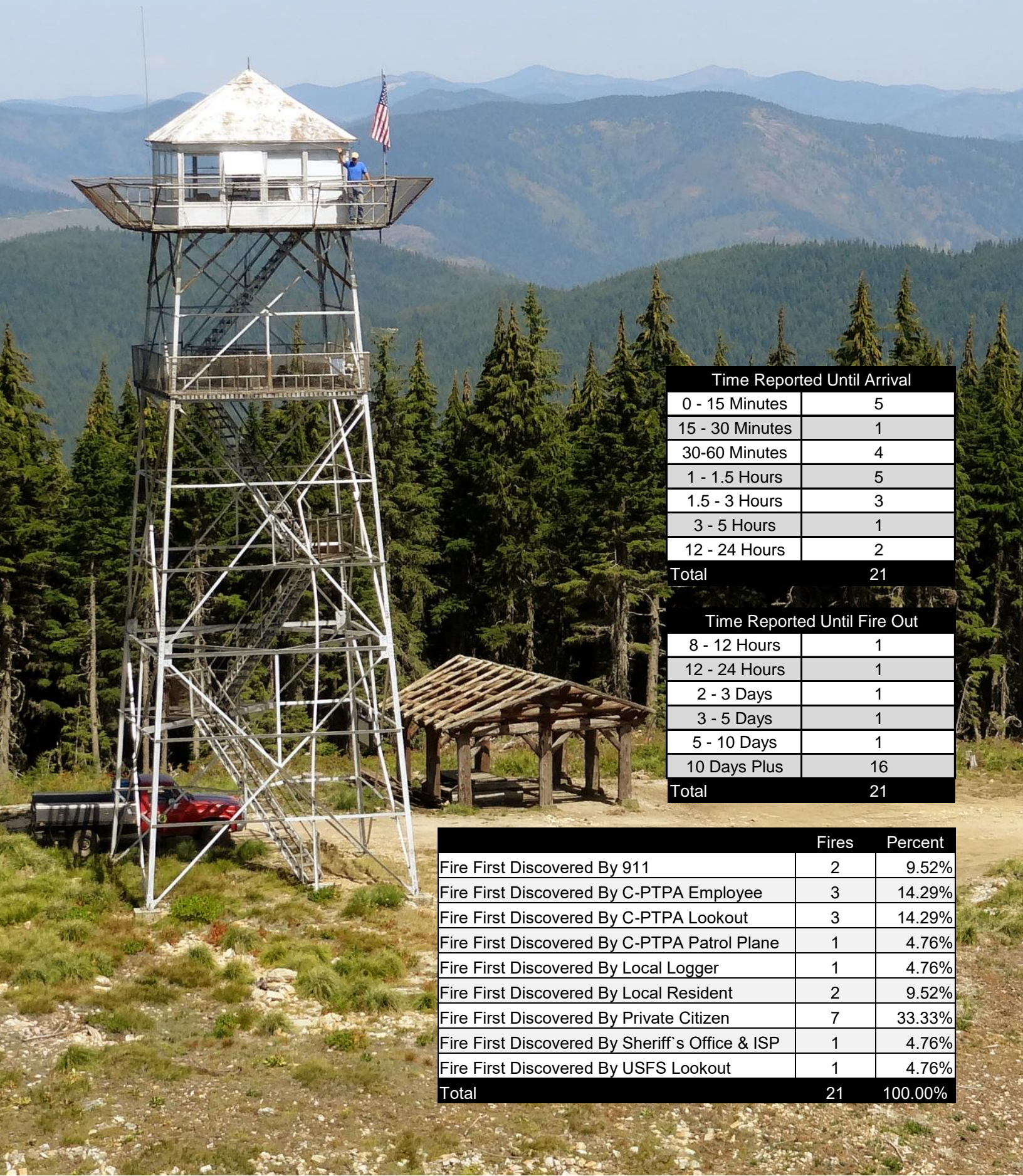
Equipment Usage on Fires

Pump Use on Fires		
Type	# of Fires	% of Fires
Pressure Pump	4	12%
Filler Pump	4	12%
Slip Tank	2	6%

Equipment Use on Fires		
Type	# of Fires	% of Fires
Type 2	4	12%
Type 4	12	36%
Type 5	2	6%
Type 6	10	30%
Type 7	6	18%
ATV	7	21%
UTV	4	12%
Dozer	3	9%
Excavator	1	3%



Detection Report 2017



Time Reported Until Arrival	
0 - 15 Minutes	5
15 - 30 Minutes	1
30-60 Minutes	4
1 - 1.5 Hours	5
1.5 - 3 Hours	3
3 - 5 Hours	1
12 - 24 Hours	2
Total	21

Time Reported Until Fire Out	
8 - 12 Hours	1
12 - 24 Hours	1
2 - 3 Days	1
3 - 5 Days	1
5 - 10 Days	1
10 Days Plus	16
Total	21

	Fires	Percent
Fire First Discovered By 911	2	9.52%
Fire First Discovered By C-PTPA Employee	3	14.29%
Fire First Discovered By C-PTPA Lookout	3	14.29%
Fire First Discovered By C-PTPA Patrol Plane	1	4.76%
Fire First Discovered By Local Logger	1	4.76%
Fire First Discovered By Local Resident	2	9.52%
Fire First Discovered By Private Citizen	7	33.33%
Fire First Discovered By Sheriff's Office & ISP	1	4.76%
Fire First Discovered By USFS Lookout	1	4.76%
Total	21	100.00%

Fuel Classifications

77 Day Statistical Fire Season July 1 - September 15

Fuel Model	Before	Statistical	After	Season Total
(A) Annual Grasslands & Forbes	0	2	0	2
(C) Long Needle Pine With Grass	0	1	0	1
(F) Low Brush & Forbes	0	1	0	1
(G) Natural Heavy Down & Dead	0	3	0	3
(H) Closed Canopy Fir	2	8	0	10
(I) Heavy Slash	0	2	0	2
(J) Medium Slash	0	0	0	0
(K) Light Slash	0	1	0	1
(L) Perennial Grasslands	0	1	0	1
(T) Sagebrush & Grass	0	0	0	0
(U) Pine With Needle Understory	0	0	0	0
Grand Total	2	19	0	21

Fire Occurrence Comparison

	Lightning	Human Caused
107 Year Average	76.71	37.53
2017 Fire Season	7	14

Burn Permits 2017

Type of Burn Permit	Total
Burn Barrel (Residential Solid Waste Disposal)	111
Crop Residue, Pasture and CRP Burning	101
Machine Piled Logging Slash	16
Residential Yard Waste/Orchard Clippings	182
Weed Control	3
Range Land	1
Hand Piled Logging Slash	69
2017 Total Burn Permits Issued	483

Monthly Precipitation Comparison 2017

Taken at Elk River, Idaho

	May	June	July	August	September	October
Rainfall (inches)	N/A	0.91	0	0.11	3.04	4.17
64 Year Average	2.46	2.27	0.92	1.06	1.66	3.91
Departure	N/A	-1.36	-0.92	-0.95	1.38	0.26

Taken at Headquarters, Idaho

	May	June	July	August	September	October
Rainfall (inches)	0	0	0.05	0.08	1.67	5.06
72 Year Average	2.81	2.77	1.26	1.37	1.85	2.75
Departure	-2.81	-2.77	-1.21	-1.29	-0.18	2.31

Log Production 2017

Total log production from operators holding agreement under Surety Bond:	161,069,630 BF
Total log production from operators under Holdback Option 2:	10,220,051 BF
Total log production from operators under Option 1:	123,390 BF
Total:	171,413,071 BF