

Clearwater - Potlatch Timber Protective Association, Inc.

2011 Annual Report



Report of the Chief Fire Warden



OFFICERS AND MEMBERS OF THE CLEARWATER-POTLATCH TIMBER PROTECTIVE ASSOCIATION, INC.

I am pleased to submit the annual report for January 1, 2011 to December 31, 2011. Included is the fiscal year report covering revenues and expenses for the period July 1, 2010 to June 30, 2011.

During 2011, our state of Idaho continued to experience a struggling economy and lower general fund tax revenues. This has resulted in four consecutive years of reductions to our general fund supplemental support to fire preparedness.

This past year, timber harvest levels within the Association remained constant. This activity resulted in our Association Cooperative Work Projects Hazard Reduction program to provide additional fund support. C-PTPA recognizes the significance of this support from our landowners to enhance the strength and capability of our Association.

Our Association has accomplished recent improvements to our radio communications capabilities over the past year. We have updated our Elk Butte Communication Site with the replacement of our primary and secondary repeaters. These aged repeaters, GE Master II, were replaced with new Motorola Quantar repeaters. Also during 2011, a VHF repeater was installed at the Bald Mountain Communication Site. This was an effort to improve firefighter communications on the south end of our protection district.



2011 - Roseburg, Oregon

In May of 2011, the first meeting was held in Roseburg, Oregon for the last five remaining forest protective associations in the United States. The Clearwater-Potlatch, Southern Idaho, Douglas, Coos Bay and Walker Range Forest Protective Associations benefitted by this opportunity to exchange ideas and discuss similar issues and and procedures pertaining to our fire protection responsibilities.

I would like to express appreciation to C-PTPA employees, cooperating agencies, landowners, and the forest industry for their support during 2011. Their spirit of assistance and cooperation is evident in our success.


Howard Weeks
Chief Fire Warden

OFFICERS

Rich McMillan, President
Don Konkol, Vice President
Howard Weeks, Secretary-Treasurer
Howard Weeks, Chief Fire Warden
Carolyn Manfull, Asst. Secretary-Treasurer

DIRECTORS

Rich McMillan	Potlatch Corporation
Don Konkol	Tri-Pro Forest Products
Roger Jansson	State of Idaho
Corby Finke	Finke Logging, Inc.
Greg Danly	Empire Lumber Company
Brent Richardson	Small Landowner Representative

FIRE COMMITTEE

Directors serve as Fire Committee

The Clearwater Timber Protective Association and the Potlatch Timber Association were separately organized in the early 1900's. In 1966, these two entities merged to form the Clearwater-Potlatch Timber Protective Association, a non-corporate entity. Subsequently, on July 16, 1982, the Association completed filings for incorporation under the Idaho Nonprofit Corporation Act and became the Clearwater-Potlatch Timber Protective Association, Inc.

The Association is controlled by forest landowners belonging to its membership and subject to the provisions of the Idaho Forestry Act. The Association is primarily responsible for the conservation and protection of the forests and forestland within the State of Idaho; specifically, the Palouse, Potlatch, and North Fork of the Clearwater River drainages.

Fire School



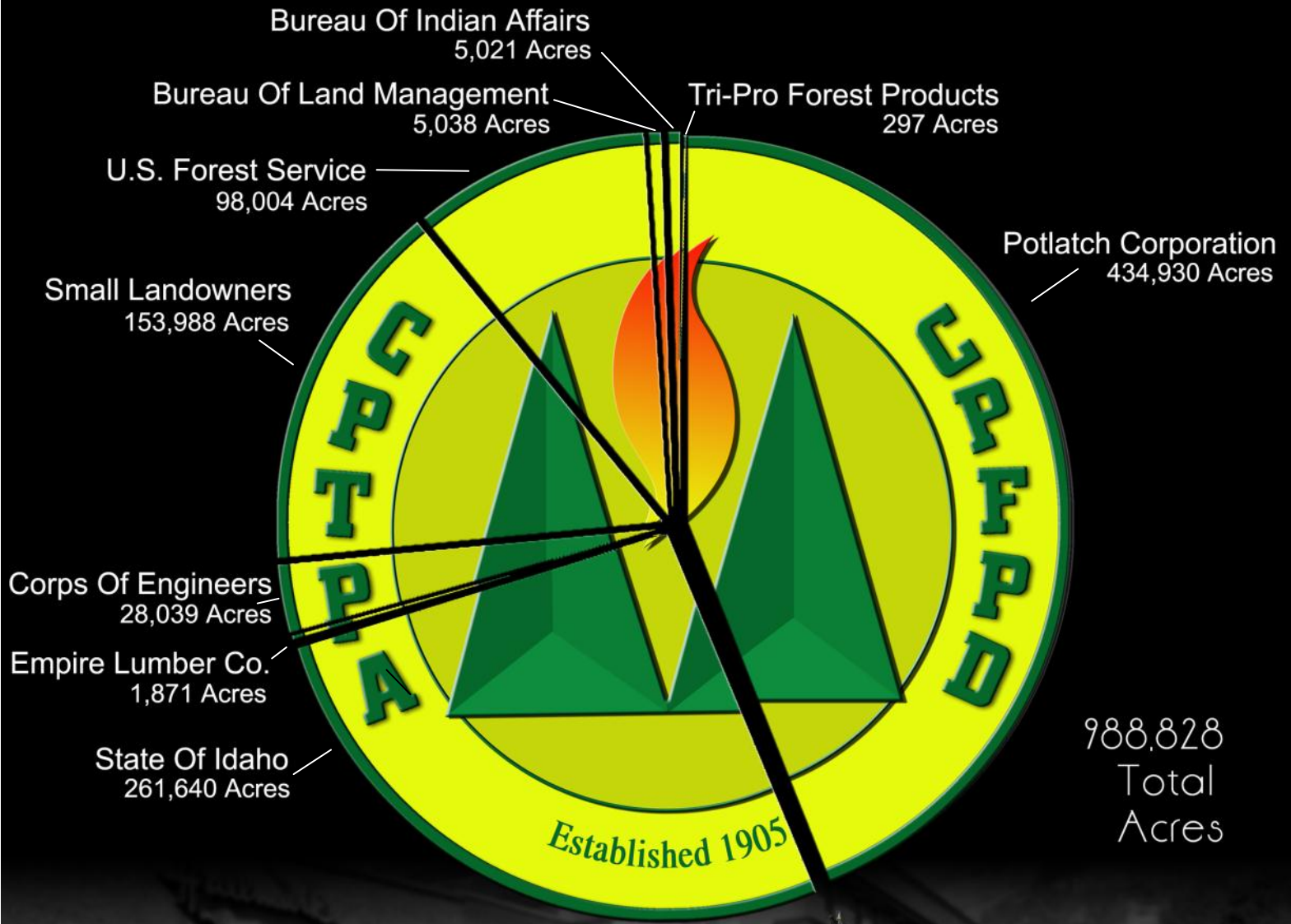
Boehls Cabin

AUDIT COMMITTEE

Robert McKnight, Chairman
Empire Lumber Company, State of Idaho
Potlatch Corporation, Tri-Pro Forest Products

LEGISLATIVE COMMITTEE

State of Idaho



Acres
and Landowners

Mission Statement

The mission of the C-PTPA is to provide a high level of fire protection for our members' valuable resources.

The hazard management program is designed to reduce the fire hazard created by harvesting timber. Prescribed burning provides a relatively controlled method of reducing potential fire growth and provides a suitable environment for tomorrow's trees to grow.

Powerline Patch Prescribed Burn, Fall 2011



An educated fire fighter is a safer fire fighter. C-PTPA fire crews are trained annually in the basic skills it takes to safely extinguish fires. The Association participates with other agencies to train loggers and rural fire departments to draw on other cooperators in high fire situations. Our efforts do not stop with today's workforce; we target tomorrow's by teaching kids the dangers and uses of fire.

Bennett Creek Fire, Summer 2011



The C-PTPA maintains an administrative complex in Orofino and three satellite fire camps strategically located in our protection area. In an effort to keep unwanted fire as small as possible, four separate facilities are maintained to reduce arrival time on fires. Quick, efficient initial attack has been and will remain a basic premise of the C-PTPA.

Fire Season 2011

The 2011 fire season for the Clearwater-Potlatch Timber Protective Association was characterized as below normal in severity and in suppression activity. Evenly spread precipitation in the month of June kept fire danger low and yielded only one small lightning caused fire. The cooler, wetter trend continued through the month of July, producing four fires, three of which were human caused. It wasn't until the end of August that our fire season's intensity increased.

On August 29th, an early morning thunder storm moved through the district resulting in 24 fire starts. By keeping to the philosophy of quick initial attack, Association personnel were able to keep fires as small as possible. The biggest fire, Thompson 2, was held to only two acres in tough terrain. The totals for August were 27 fires, 23 caused from lightning, resulting in 10.54 acres burned.

September brought additional warm weather until the middle of the month when temperatures cooled and rain occurred. The season total was 42 fires requiring suppression, a 75 fire departure from our annual average of 117 fires. The Association experienced a high manning class through the majority of the typical 77-day fire season, only reaching the very high class once in September and never reaching the extreme class. Lightning accounted for 29 fires, burning 9.87 acres. Human caused fires totaled 13, burning 11.9 acres.

The Idaho Department of Lands Standard of Protection requires State Districts to meet the following standards:	The Clearwater-Potlatch Timber Protective Association has refined the IDL standards for the fuels and resources of our protective district to:	C-PTPA 2011
◆ Fires should be contained to less than 10 acres 94% of the time	◆ Fires should be contained to less than 10 acres 97% of the time	100%
◆ IDL should have no more than 34 human caused fires	◆ C-PTPA should have no more than 24 human caused fires	13 Fires 54%
◆ IDL should burn no more than 864 acres	◆ C-PTPA should burn no more than 380 acres	21.77 Acres 6%

This year, C-PTPA had 13 human caused fires for 54% of the allowable standard and burned 21.77 acres for 6% of the allowable standard. The human caused fires included campfires, debris burns, equipment use, children and miscellaneous.

MANNING CLASS FOR TYPICAL 77 DAY FIRE SEASON							
Month	Low	Moderate	High -3	High +3	Very High	Extreme	Total Days
July	2	3	26	0	0	0	31
August	0	0	3	28	0	0	31
September	0	0	0	14	1	0	15
	2	3	29	42	1	0	77

Retardant Aircraft



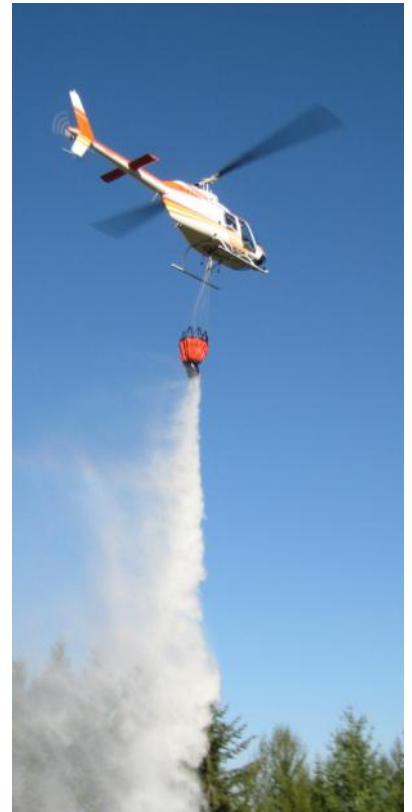
During the 2011 fire season, the Association contracted a Bell 206 L-3 Helicopter on 10-minute standby from Hillcrest Aviation. Through a cooperative agreement with the Idaho Department of Lands, two single engine air tankers (SEATS) were available to the Association. The 802F Air Tractor fixed wing aircraft, stationed in Grangeville, Idaho, are capable of delivering 800 gallons of retardant. Due to a moderate fire season, they were not used on any C-PTPA fires.

The C-PTPA helitack program, which consists of three-person modules at predetermined locations, was continued in 2011. The helicopter can transport helitack modules to fires where they can quickly begin suppression activities. Once on the scene, the helicopter can attach a water bucket and begin dropping water from a nearby pond. The aircraft is capable of slinging in a 72 gallon water blivet or other cargo to aid firefighters in inaccessible locations. This program, assisted by the retardant aircraft, has proven to be an efficient, effective means of wildfire suppression.

The helicopter was used for a total of 97.2 hours that included:

- presuppression – 71 hours
- fire suppression – 26.2 hours

Water drops amounted to 21,876 gallons for a delivered cost per gallon of \$1.92 The helicopter was contracted for 110 hours of guaranteed flight time during the 89 day availability period.



Cooperative Agreement

A cooperative agreement continues to this date between the Association and the State Board of Land Commissioners through the Director of the Idaho Department of Lands. The purpose of this agreement is to clarify the forest protection relationship between the Association and the Idaho Department of Lands. It defines the reimbursable emergency fire suppression expenditures that may be incurred by the State and Association. In addition, the agreement addresses the following: (1) fire protection plans, (2) fire management, (3) reports and records, (4) budgets, (5) administrative matters, (6) payments, (7) duration, and (8) limited obligation by the State.

Dworshak Project - Added Protection

The contract with the Corps of Engineers to provide additional protection services was continued during the 2011 fire season. This agreement provides for boat patrols, aerial patrols, fire prevention, prescribed fire and maintenance efforts in the campsites. An additional contract was negotiated in 1993 with the C-PTPA accepting the responsibility of preparing the fire lines in over 100 campsites along the 53-mile reservoir. This contract was continued for the 2011 season.

In 2011, there were no wildfires that required suppression efforts on Corps of Engineers property. The marine patrol continued prevention and detection efforts in 2011 and early evening aerial patrols were continued on high activity days and holidays.

The draw down of the reservoir has reduced the visitor use of the mini camps, while increasing the number of fires being built outside of fire grills and established campgrounds. The fact that fires are being ignited below the vegetation line encourages visitors to assume there is no danger, so they are more inclined to build fires larger and leave them burning.

Hazard Management

The operating agreement between the State of Idaho and the Clearwater-Potlatch Timber Protective Association for the management of fire hazards resulting from commercial harvest was continued in 2011.

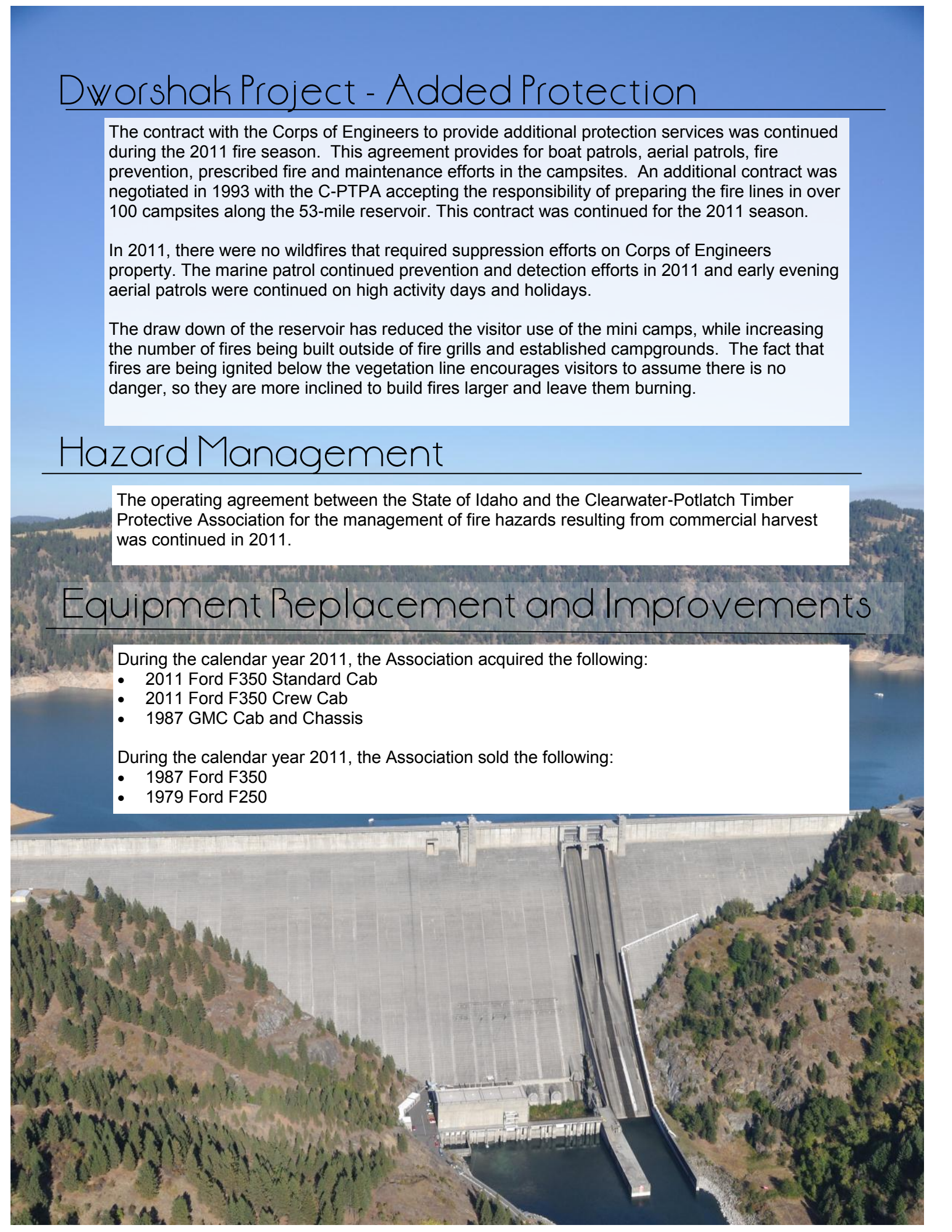
Equipment Replacement and Improvements

During the calendar year 2011, the Association acquired the following:

- 2011 Ford F350 Standard Cab
- 2011 Ford F350 Crew Cab
- 1987 GMC Cab and Chassis

During the calendar year 2011, the Association sold the following:

- 1987 Ford F350
- 1979 Ford F250

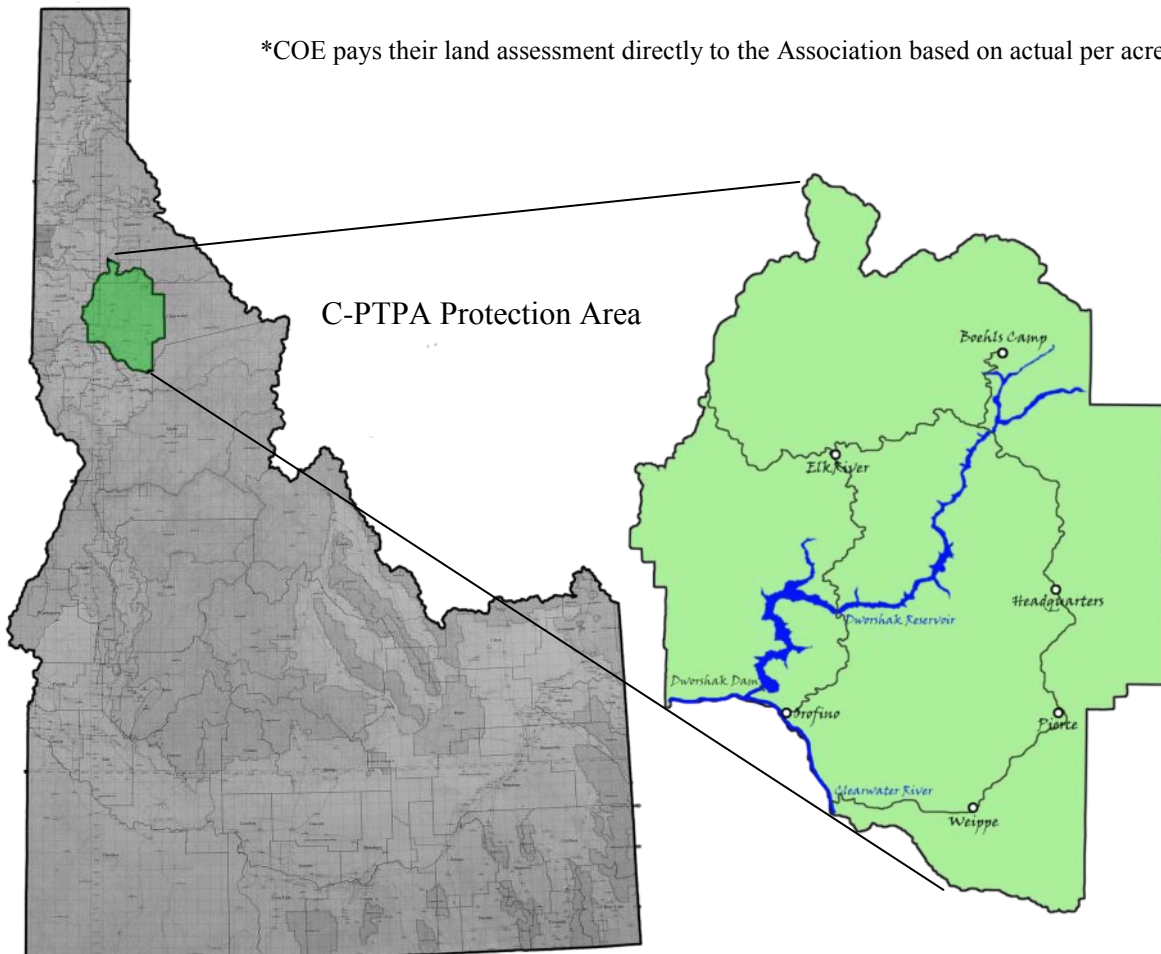


Acres and Assessment of Members

7/1/10 to 7/1/11

<u>MEMBER</u>	<u>ACREAGE</u>	<u>60 CENT ASSESSMENT</u>
Empire Lumber Company	1,871	\$1,123
Tri-Pro Forest Products	297	\$178
Potlatch Corporation	434,930	\$260,958
State of Idaho	261,640	\$156,984
*Corps of Engineers	28,039	\$36,894
1ST ASSESSMENT LEVIED 7/1/10	<u>726,777</u>	<u>\$456,137</u>

*COE pays their land assessment directly to the Association based on actual per acre cost.



Balance Sheet - June 30, 2011

Assets

Current Assets

Cash	\$594,404
Receivables	\$62,828
Unbilled work in process	\$55,952
Inventory	\$52,611
Prepaid expenses	\$50,775
Total current assets	<u>\$816,570</u>

Property and Equipment, net of accumulated depreciation of \$2,477,656

\$780,441

Total assets

\$1,597,011

Liabilities and Net Assets

Current Liabilities

Accounts payable	\$13,385
Accrued interest payable	\$1,307
Accrued wages	\$80,758
Accrued vacation	\$61,148
Accrued retiree insurance	\$53,672
Deferred revenue	\$6,046
Note payable, current portion	\$31,199
Total current liabilities	<u>\$247,515</u>

Long-Term Liabilities

Note payable, net of current maturities	<u>\$32,202</u>
Total long term liabilities	<u>\$32,202</u>

Total liabilities

\$279,717

Net Assets

Unrestricted	\$1,315,034
Temporarily restricted	<u>\$2,260</u>
Total net assets	<u>\$1,317,294</u>

Total liabilities and net assets

\$1,597,011

2011 Fires

Date	Fire #	Fire Name	Area	Twn	Rge.	Section	Qrt.	Acres	Class	Cause	Landowner	Cost	Damages
6/23/11	99001	Silver Butte	HQ	39N	5E	22	NENW	0.1	.25 OR LESS	Lightning	IDL	\$1,025.99	\$0.00
7/5/11	99002	Johnson Mill Pile	ORO	37N	3E	5	NWNW	0.1	.25 OR LESS	Debris Burning	IDL	\$1,964.79	\$0.00
7/12/11	99003	Park Pile	ER	39N	1W	9	SENW	0.1	.25 OR LESS	Debris Burning	PVT	\$3,573.42	\$0.00
7/17/11	99004	W. Fork Floodwood Cr.	BLS	42N	4E	21	SWSW	0.1	.25 OR LESS	Campfire	IDL	\$1,011.72	\$0.00
7/31/11	99005	Captain's Row	ER	39N	3E	5	NESW	0.1	.25 OR LESS	Lightning	Potlatch	\$641.65	\$250.00
8/1/11	99006	Lightning Point	HQ	39N	4E	2	SWSE	1	.26 THROUGH 9.9	Lightning	Potlatch	\$8,490.58	\$0.00
8/2/11	99007	Powerline	HQ	36N	5E	20	SWNE	0.1	.25 OR LESS	Miscellaneous	Potlatch	\$119.73	\$0.00
8/13/11	99008	Lacey Bale	HQ	35N	4E	13	SWSW	0.5	.26 THROUGH 9.9	Equipment Use	PVT	\$1,412.57	\$0.00
8/15/11	99009	Estus Homestead	HQ	35N	3E	23	NESW	0.85	.26 THROUGH 9.9	Children	PVT	\$2,687.12	\$0.00
8/21/11	99010	Bedbug Loader	ORO	38N	1E	7	SWSE	0.1	.25 OR LESS	Equipment Use	Potlatch	\$4,746.23	\$0.00
8/29/11	99011	Powerline Patch	ORO	37N	3E	9	SENE	0.32	.26 THROUGH 9.9	Lightning	IDL	\$5,622.82	\$0.00
8/29/11	99012	Moose Creek	HQ	38N	6E	1	NWNW	0.25	.25 OR LESS	Lightning	Potlatch	\$2,400.47	\$0.00
8/29/11	99013	Park Breaks	ER	39N	1W	8	NWNW	0.1	.25 OR LESS	Lightning	PVT	\$1,714.01	\$300.00
8/29/11	99014	Butte Creek	HQ	40N	6E	4	SWSW	0.1	.25 OR LESS	Lightning	Potlatch	\$1,527.42	\$0.00
8/29/11	99015	Kauffman Saddle	HQ	41N	6E	33	NESW	0.25	.25 OR LESS	Lightning	USFS	\$6,261.79	\$0.00
8/29/11	99016	Flannery Creek	HQ	39N	6E	23	SESE	0.15	.25 OR LESS	Lightning	Potlatch	\$1,254.88	\$0.00
8/29/11	99017	Cemetary	HQ	35N	3E	14	NENE	0.33	.26 THROUGH 9.9	Lightning	PVT	\$1,460.84	\$0.00
8/29/11	99018	Shake Meadow Cr	ORO	36N	3E	24	SWSW	0.25	.25 OR LESS	Lightning	Potlatch	\$1,382.45	\$0.00
8/29/11	99019	Cook Cemetary	ORO	36N	3E	22	SWNE	0.25	.25 OR LESS	Lightning	PVT	\$1,131.69	\$0.00
8/29/11	99020	Thompson 2	HQ	40N	6E	3	SENE	2	.26 THROUGH 9.9	Lightning	Potlatch	\$11,190.47	\$0.00
8/29/11	99021	57	HQ	38N	6E	30	SENE	0.25	.25 OR LESS	Lightning	Potlatch	\$1,917.78	\$0.00
8/29/11	99022	Teepee Cr.	HQ	39N	6E	24	NESW	0.1	.25 OR LESS	Lightning	Potlatch	\$751.26	\$0.00
8/29/11	99023	Bennett Cr.	ORO	36N	3E	12	NENE	1.5	.26 THROUGH 9.9	Lightning	Potlatch	\$13,469.98	\$0.00
8/29/11	99024	Campbell's Pond	ORO	37N	5E	20	NENW	0.1	.25 OR LESS	Lightning	Potlatch	\$936.68	\$0.00
8/29/11	99025	Solo Rudo	ORO	36N	4E	6	SENW	0.2	.25 OR LESS	Lightning	Potlatch	\$4,692.57	\$0.00
8/29/11	99026	West Fork Hodson Cr.	ORO	37N	3E	11	NENW	0.1	.25 OR LESS	Lightning	IDL	\$925.73	\$0.00
8/30/11	99027	Texas Long	HQ	35N	3E	15	NWNW	0.64	.26 THROUGH 9.9	Lightning	PVT	\$2,916.97	\$0.00
8/30/11	99028	Teepee Saddle	HQ	39N	6E	13	NENW	0.1	.25 OR LESS	Lightning	Potlatch	\$919.77	\$0.00
8/30/11	99029	West Elk	HQ	38N	6E	13	NWSE	0.1	.25 OR LESS	Lightning	IDL	\$807.95	\$0.00
8/30/11	99030	Band Mill	ORO	37N	3E	21	SWSE	0.35	.26 THROUGH 9.9	Lightning	Potlatch	\$6,090.24	\$500.00
8/30/11	99031	Cardiff Face	HQ	37N	5E	2	NWNE	0.25	.25 OR LESS	Lightning	Potlatch	\$1,369.11	\$0.00
8/31/11	99032	French Pole	HQ	37N	6E	13	SENE	0.3	.26 THROUGH 9.9	Lightning	IDL	\$428.51	\$0.00
9/2/11	99033	Golden Cobra	ORO	36N	3E	22	SWSW	0.15	.25 OR LESS	Lightning	PVT	\$4,198.00	\$0.00
9/3/11	99034	Shotgun Willy	ORO	37N	3E	11	NESW	0.18	.25 OR LESS	Lightning	PVT	\$2,334.28	\$0.00
9/5/11	99035	Freeman Creek	ORO	37N	1E	1	SWNW	0.25	.25 OR LESS	Debris Burning	COE	\$7,251.81	\$0.00
9/7/11	99036	South Road	ORO	37N	1W	27	NWSE	4.5	.26 THROUGH 9.9	Equipment Use	PVT	\$1,380.64	\$0.00
9/7/11	99037	Bull Run	ER	39N	2E	10	NWSW	0.1	.25 OR LESS	Equipment Use	Potlatch	\$3,079.10	\$0.00
9/19/11	99038	Democrat Ridge	HQ	37N	4E	11	NWNE	0.25	.25 OR LESS	Lightning	IDL	\$6,999.61	\$0.00
9/20/11	99039	Noseeum Ridge	BLS	41N	4E	33	SWSW	0.1	.25 OR LESS	Lightning	COE	\$737.69	\$100.00
9/23/11	99040	Ford's Loader	ORO	36N	4E	33	SWNE	0.1	.25 OR LESS	Equipment Use	Potlatch	\$4,575.26	\$0.00
9/25/11	99041	Crampton Cr.	HQ	40N	5E	1	NENE	5	.26 THROUGH 9.9	Campfire	USFS	\$17,324.68	\$0.00
9/26/11	99042	Alpine Drive Pile	ORO	36N	2E	3	SESW	0.1	.25 OR LESS	Debris Burning	PVT	\$215.43	\$0.00
Totals	42							21.77				\$142,943.69	\$1,150.00

Date	Date of Fire
Fire Number	Fire Number
Fire Name	Name of Fire
Area	BLS - Boehls ER - Elk River HQ - Headquarters ORO - Orofino
Twn	Township
Rge	Range
Section	Subsection
Qrt.	Quarter Section
Acres	Acres Burned
Class	Fire Size Class

Cause	Cause of Fire
Landowner	Land owner
	PC - Potlatch IDL - Idaho Dept. of Lands COE - Corps of Engineers DOT - Dept. of Trans IF & G - Idaho Fish and Game NM - Non member USFS - U.S. Forest Service BLM - Bureau of Land Management PVT—Private Landowner
Cost	Cost of Fire
Damages	Resource Damages

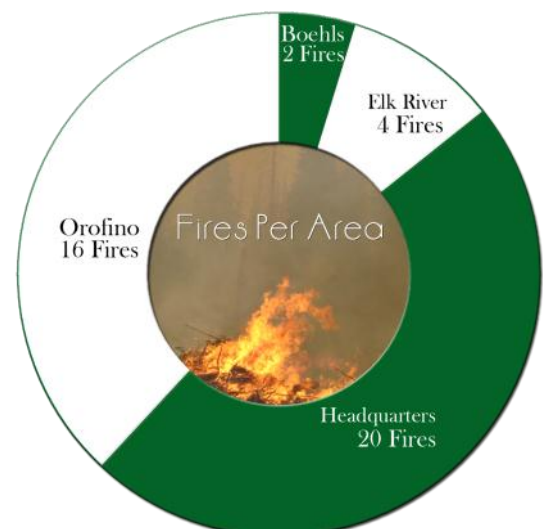
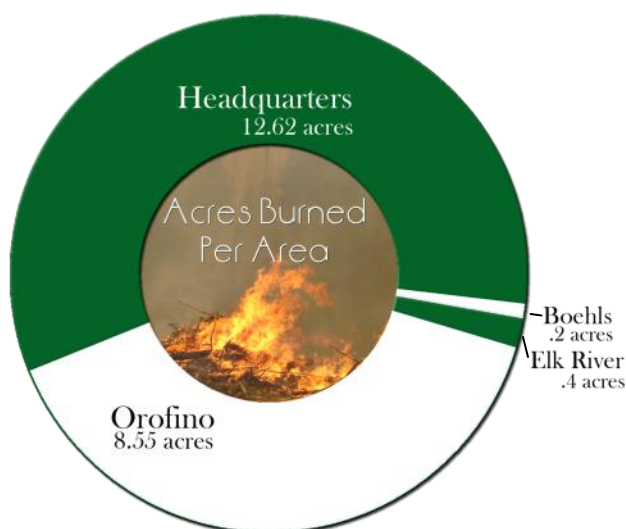
Fire Season Information

Fire Type By Landowner

Landowner	Lightning	Campfire	Debris Burning	Equipment Use	Children	Misc.
Potlatch	15	0	0	3	0	1
Idaho Department of Lands	6	1	1	0	0	0
U.S. Forest Service	1	1	0	0	0	0
Corps of Engineers	1	0	1	0	0	0
Small Landowner	6	0	2	2	1	0
Totals	29	2	4	5	1	1

Fire Type By Month

Landowner	Lightning	Campfire	Debris Burning	Equipment Use	Children	Misc.
June	1	0	0	0	0	0
July	1	1	2	0	0	0
August	23	0	0	2	1	1
September	4	1	2	3	0	0
Totals	29	2	4	5	1	1

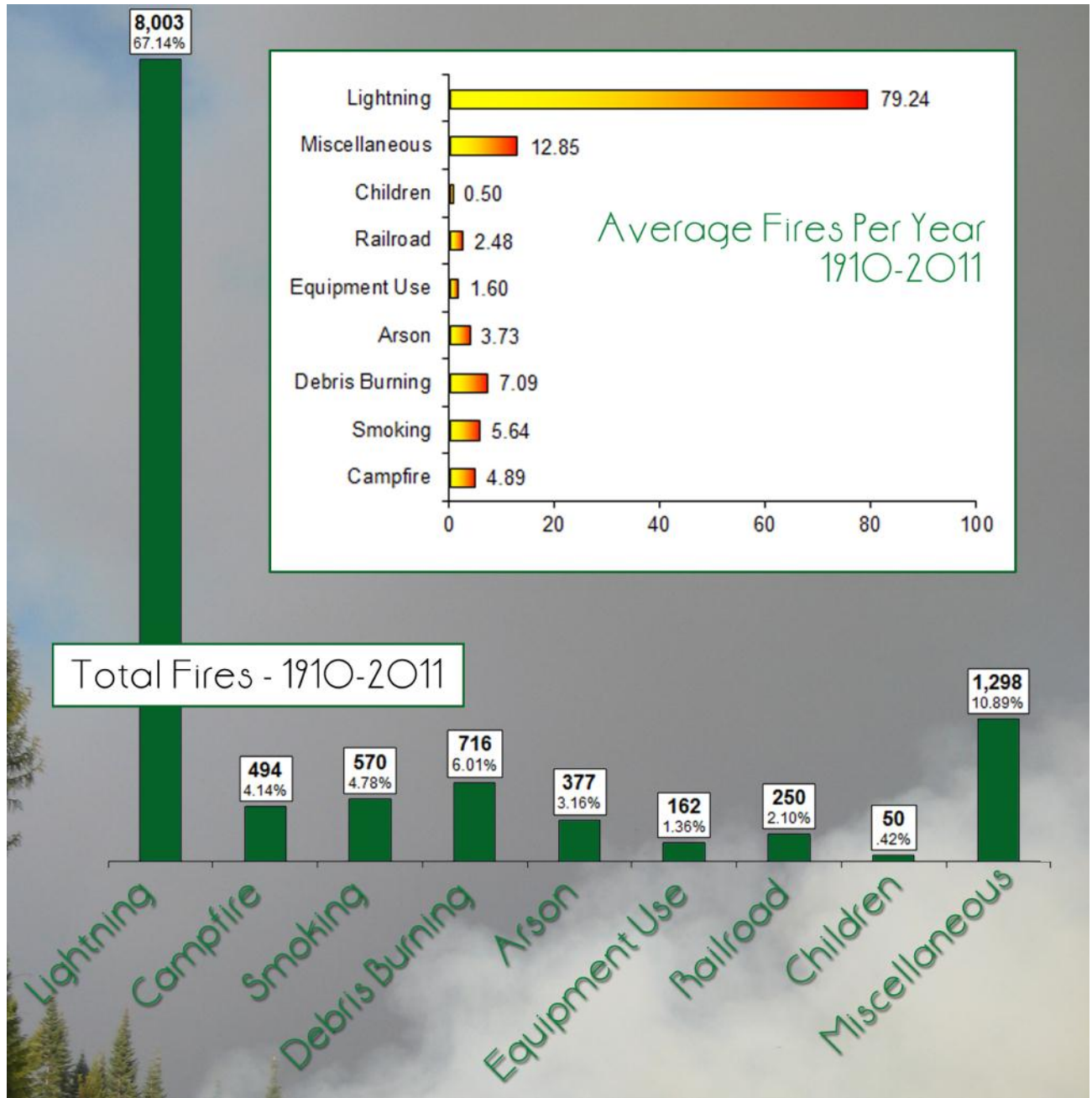


42 Year Fire History

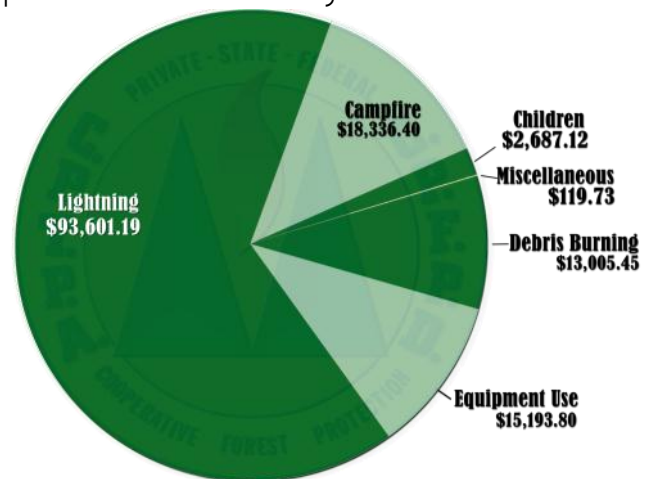
Year	Spot		A Fires		B Fires		C Fires		D Fires		E Fires		F Fires		Total	Total
	spot	acres	#	acres	#	acres	#	acres	#	acres	#	acres	#	acres	Fires	Acres
1970	204	0.0	12	3.0	43	77.5	11	317.0	0	0.0	0	0.0	0	0.0	270	397.5
1971	64	0.0	0	0.0	6	16.0	1	10.0	0	0.0	0	0.0	0	0.0	71	26.0
1972	180	0.0	1	0.0	9	17.0	0	0.0	0	0.0	0	0.0	0	0.0	190	17.0
1973	101	0.0	5	1.3	14	25.8	4	87.0	1	180.0	0	0.0	0	0.0	125	294.0
1974	120	0.0	4	1.0	14	11.3	3	83.0	0	0.0	0	0.0	1	1,150.0	142	1,245.3
1975	87	0.0	1	0.3	10	13.4	1	15.0	0	0.0	0	0.0	0	0.0	99	28.6
1976	107	0.0	3	0.8	5	16.0	0	0.0	1	100.0	0	0.0	0	0.0	116	116.8
1977	118	0.0	3	0.8	8	11.4	1	20.0	0	0.0	0	0.0	0	0.0	130	32.2
1978	99	0.0	0	0.0	5	10.0	1	20.0	0	0.0	0	0.0	0	0.0	105	30.0
1979	139	0.0	0	0.0	18	19.8	0	0.0	0	0.0	0	0.0	0	0.0	157	19.8
1980	42	0.0	0	0.0	2	4.5	0	0.0	1	100.0	0	0.0	0	0.0	45	104.5
1981	55	0.0	4	1.0	4	3.0	1	40.0	0	0.0	0	0.0	0	0.0	64	44.0
1982	55	0.0	3	0.8	5	3.4	0	0.0	1	100.0	0	0.0	0	0.0	64	104.1
1983	52	0.0	0	0.0	5	9.0	1	75.0	0	0.0	0	0.0	0	0.0	58	84.0
1984	151	0.0	0	0.0	17	12.3	2	110.0	0	0.0	1	360.0	0	0.0	171	482.3
1985	79	0.0	7	1.8	9	14.3	2	67.0	0	0.0	0	0.0	0	0.0	97	83.0
1986	172	0.0	0	0.0	43	92.3	10	176.0	2	254.0	1	427.0	1	1,438.0	229	2,387.3
1987	77	0.0	0	0.0	19	21.0	0	0.0	0	0.0	0	0.0	0	0.0	96	21.0
1988	97	0.0	0	0.0	15	28.5	2	64.0	2	228.0	0	0.0	0	0.0	116	320.5
1989	0	0.0	182	0.0	20	32.0	0	0.0	0	0.0	0	0.0	0	0.0	202	32.0
1990	0	0.0	90	4.1	14	24.3	0	0.0	0	0.0	0	0.0	0	0.0	104	28.4
1991	0	0.0	95	10.6	16	23.8	0	0.0	0	0.0	0	0.0	0	0.0	111	34.3
1992	0	0.0	124	13.7	25	38.8	1	50.0	0	0.0	0	0.0	0	0.0	150	102.5
1993	0	0.0	34	3.7	2	2.5	2	40.0	0	0.0	0	0.0	0	0.0	38	46.2
1994	0	0.0	234	30.7	104	185.1	9	144.5	0	0.0	0	0.0	0	0.0	347	360.2
1995	0	0.0	43	6.1	8	13.8	0	0.0	0	0.0	0	0.0	0	0.0	51	19.9
1996	0	0.0	58	8.3	17	20.4	1	20.0	1	230.0	0	0.0	0	0.0	77	278.7
1997	0	0.0	33	3.7	7	14.1	2	51.0	0	0.0	0	0.0	0	0.0	42	68.8
1998	0	0.0	78	8.5	6	12.0	2	46.0	0	0.0	0	0.0	0	0.0	86	66.5
1999	0	0.0	61	8.1	11	20.7	0	0.0	0	0.0	0	0.0	0	0.0	72	28.9
2000	0	0.0	34	4.1	8	15.1	0	0.0	0	0.0	0	0.0	0	0.0	42	19.1
2001	0	0.0	57	7.8	13	17.8	0	0.0	0	0.0	0	0.0	0	0.0	70	25.6
2002	0	0.0	33	4.4	7	13.1	2	41.0	0	0.0	0	0.0	0	0.0	42	58.5
2003	0	0.0	28	3.7	5	7.2	1	31.7	0	0.0	0	0.0	0	0.0	34	42.6
2004	0	0.0	63	7.2	6	12.4	1	19.2	0	0.0	0	0.0	0	0.0	70	38.8
2005	0	0.0	14	2.0	4	21.0	1	26.0	0	0.0	0	0.0	0	0.0	19	49.0
2006	0	0.0	101	14.7	10	15.0	1	34.0	0	0.0	0	0.0	0	0.0	112	63.7
2007	0	0.0	32	4.6	16	38.9	3	76.5	0	0.0	0	0.0	0	0.0	51	120.0
2008	0	0.0	25	3.6	11	13.8	1	90.0	0	0.0	0	0.0	0	0.0	37	107.4
2009	0	0.0	34	3.7	6	5.0	0	0.0	0	0.0	0	0.0	0	0.0	40	8.7
2010	0	0.0	19	2.1	8	17.3	1	23.0	0	0.0	0	0.0	0	0.0	28	42.3
2011	0	0.0	30	4.5	12	17.3	0	0.0	0	0.0	0	0.0	0	0.0	42	21.8
1,999	0.0	1,545	170.1	587	987.3	68	1,776.9	9	1,192.0	2	787.0	2	2,588.0	4,212	7,501.2	

Size Class Code	Fires			Acres		
	Total	Average/Year	% of Total	Total	Average/Year	% of Total
(S) Spot	1,999	47.6	47.5%	0.0	0.0	0.0%
(A) .25 or less	1,545	36.8	36.7%	170.1	4.0	2.3%
(B) .26 through 9.9	587	14.0	13.9%	987.3	23.5	13.2%
(C) 10 through 99.9	68	1.6	1.6%	1,776.9	42.3	23.7%
(D) 100 through 299.9	9	0.2	0.2%	1,192.0	28.4	15.9%
(E) 300 through 999.9	2	0.0	0.0%	787.0	18.7	10.5%
(F) 1000 through 4999.9	2	0.0	0.0%	2,588.0	61.6	34.5%
Total	4,212	100.3	100.0%	7,501.2	178.6	100%

101 Year Fire Occurrence



Suppression Cost By Fire Cause





Airplane Usage on Fires

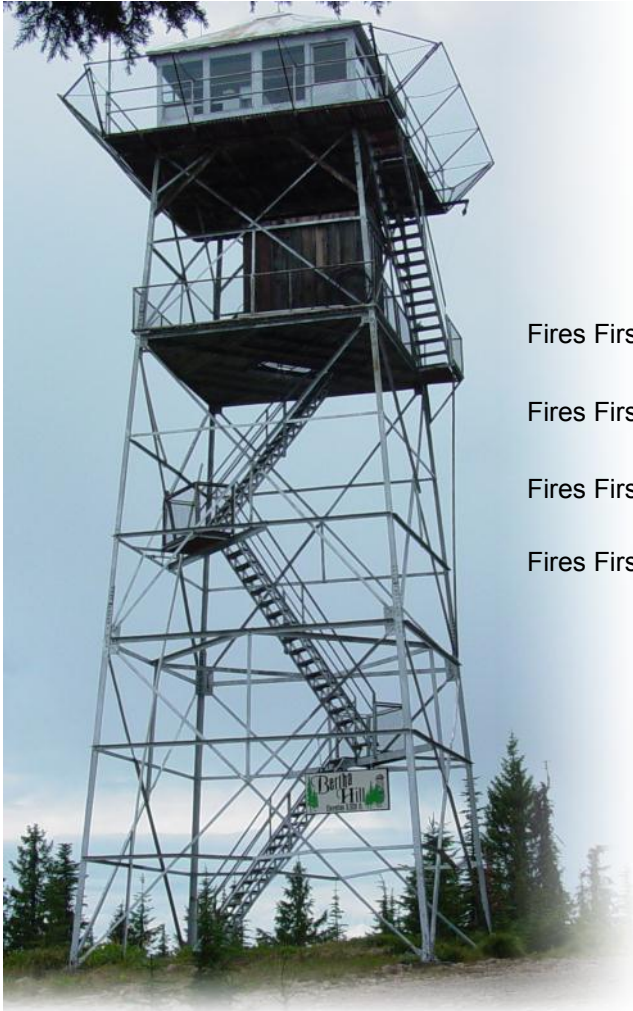
PROGRAM	CESSNA	SUPERCUB	TOTAL HOURS
Protection	124.7	5.3	130
Suppression	22.3	0	22.3
Administration	0	0	0
GSA Acquisition	0	0	0
Corps of Engineers	23.6	23.4	47
Ambulance Service	0	0	0
Aircraft Maintenance	4.9	1	5.9
Hazard Management	0	0	0
Camps	0	0	0
Miscellaneous Jobs	0	0	0
TOTAL HOURS	175.5	29.7	205.2
% OF TOTAL	86%	14%	100%

Equipment Usage on Fires

ENGINE USE ON FIRES			PUMP USE ON FIRES		
TYPE	# OF FIRES	% OF FIRES	TYPE	# OF FIRES	% OF FIRES
Type 2	8	19%	1 1/2" Homelite	18	43%
Type 4	21	50%	Sliptank	15	36%
Type 6	15	36%	1" Waterbug	2	5%
Type 7	42	100%	3"	1	2%
ATV	2	5%	Mark 3	1	2%
Dozer	4	10%			



Detection Report 2011



	NUMBER	PERCENT
Fires First Discovered By Lookouts	3	7.14%
Fires First Discovered By Air Patrol	19	45.24%
Fires First Discovered By Others	19	45.24%
Fires First Discovered By Association Employees	1	2.38%

REPORT TIME TO FIRST ATTACK

	# OF FIRES
0 - 15 minutes	3
15 - 30 minutes	8
30 - 60 minutes	14
1 - 1 1/2 hours	7
1 1/2 - 3 hours	7
3 - 5 hours	1
5 - 8 hours	1
8 - 12 hours	0
12 - 24 hours	0
24 + hours	1

TOTAL 42

TIME REPORTED UNTIL FIRE OUT

	# OF FIRES
0 - 1 hour	0
1 - 2 hours	1
2 - 4 hours	0
4 - 8 hours	1
8 - 12 hours	0
12 - 24 hours	0
1 - 2 days	1
2 - 3 days	9
3 - 5 days	16
5 - 10 days	11
10 days +	3

TOTAL 42

Burning Permits 2011

	BURN BARREL	YARD WASTE	FIELD BURNING	LOGGING SLASH	SPECIAL USE	TOTAL
SPRING	6	117	0	20	0	143
SUMMER	12	28	7	4	0	51
FALL	15	59	6	29	1	110
TOTAL	33	204	13	53	1	304

Fire Occurrence Comparison

	LIGHTNING	HUMAN - CAUSED
Past 101 Year Average	79.24	38.77
2011 Fire Season	29	13

Fuel Classifications

77 Day Statistical Fire Season July 1 - September 15

Fuel Model	<u>Before</u>	<u>Statistical</u>	<u>After</u>	<u>SEASON TOTAL</u>
(A) Annual Grasslands & Forbes	0	5	0	5
(C) Long Needle Pine with Grass	0	4	0	4
(G) Natural Heavy Down & Dead	0	3	0	3
(H) Closed Canopy Fir	1	11	2	14
(I) Heavy Slash	0	6	0	6
(J) Medium Slash	0	2	0	2
(K) Light Slash	0	5	2	7
(L) Perennial Grasslands	0	0	0	0
(T) Sagebrush & Grass	0	0	0	0
(U) Pine with Needle Understory	0	0	1	1
(F) Low Brush and Forbes	0	0	0	0
TOTAL	1	36	5	42

Monthly Precipitation Comparison 2011

TAKEN AT ELK RIVER, IDAHO

	May	June	July	August	September	October
Rainfall (inches)	4.65	2.45	0.96	0.05	0.52	3.10
58 Year Average	2.60	2.28	0.98	1.15	1.68	4.15
Departure	2.05	0.17	-0.02	-1.10	-1.16	-1.05

TAKEN AT HEADQUARTERS, IDAHO

	May	June	July	August	September	October
Rainfall (inches)	5.31	4.11	1.30	0.26	0.59	4.66
66 Year Average	2.86	2.80	1.31	1.42	1.85	2.61
Departure	2.45	1.31	-0.01	-1.16	-1.26	2.05



Hazard Reduction Pile Burning, Fall 2011

Log Production 2011

Total log production from operators holding contracts under Forest Master Contract: Not Available

Total log production from operators holding agreement under Surety Bond: 178,176,638 BF

Total log production from operators under Holdback Option: 3,633,090 BF

Total log production from operators under Option 1: 658,352 BF

182,468,080 BF

